
Process Engineering Consultancy

EXCELLENCE IN APPLIED CHEMICAL ENGINEERING

Jason Tan

Business Development Manager

016-2240327



www.full-point-concept.com

AGENDA

INTRODUCTION

CAPABILITIES

CONSULTANCY
SERVICES

INTRODUCTION

FULL POINT CONCEPT

- **START UP**
 - Paid Up Capital – RM 750,000.00
 - Authorized – RM 1,000,000.00
 - Banker – PUBLIC BANK BHD.
 - Locally incorporated since 2000.
- **INVOLVEMENT**
 - Onshore & Offshore Oil & Gas Industries / Refineries
 - Chemical & Water Industries
 - Power Industries



CAPABILITIES

FULL POINT CONCEPT

- LOCAL IN-HOUSE ENGINEERING
 - Package Design on Air Compressors, Dryers, Gas Generators (N₂, H₂, O₂, VOC Recovery)
 - Customized process controls with PLC
 - Design to Build
- PACKAGING WORKS
 - Package / Skid Fabrications (Carbon Steel, Stainless Steel)
 - In-House QC Inspectors & Engineers
 - System Integration with engineering expertise
 - Build as Designed



COMPLETE DESIGN TO SYSTEM INTEGRATION



One Stop
Solutions
Provider

Detail
Design &
Engineer

Operate
&
Maintain

Build &
Install



CAPABILITIES – DESIGN & ENGINEER

Local Representative for Process International – Applied Chemical Engineering

- **Teamed Up with Process International, LLC.**
 - **Delivering accurate, unbiased engineering**
 - **Conceiving feasible optimization plans**
 - **Applying in our system integration**
 - **Enhanced Detail Training & Operational Support**
 - **Completes the scope of “One Stop Solution Provider”**



CAPABILITIES – DESIGN & ENGINEER

Local Representative for Process International – Applied Chemical Engineering

- **Process International, LLC was established in 1996.**
- **Specializes in only chemical engineering, independent & unbiased, including:**
 - **PROCESS DESIGN**
 - **PROCESS MODELLING & SIMULATION**
 - **PROCESS SAFETY MANAGEMENT**
 - **OPERATIONAL DESIGN & SUPPORT**
 - **ISA COMPLIANCE – SAFETY INSTRUMENTED SYSTEMS.**



PROCESS INTERNATIONAL – GLOBAL CLIENTS



CAPABILITIES

DESIGN & OPERATIONAL
SUPPORT

MODELING &
SIMULATION

SAFETY & SIS - ISA
COMPLIANT



PROCESS DESIGN & OPERATIONAL SUPPORT

Chemical Engineering Services in Malaysia

- Process Design Studies and Packages (FEL-0/1/2/3) & BED
- Feasibility Studies
- Capacity evaluations/revamp studies
- Utility evaluations and optimizations
- Process alternatives technical & economic evaluations
- Heat & Material Balance (HMB) development
- Process Flow Diagram (PFD) development
- Process controls description/functional control specifications
- Preliminary cost estimates (CAPEX and OPEX)
- Relief Device sizing
- Commissioning plans and startup support
- Process troubleshooting
- Process evaluation
- Process optimization
- Debottlenecking
- Control systems process support
- Operating procedure development
- Operator and engineering staff training
- On-site process engineering staff augmentation
- Training courses for process plant



PROCESS SAFETY MANAGEMENT & INSTRUMENTED SYSTEM

Chemical Engineering Services in Malaysia

- Conducting Process Hazards Analyses (PHAs / HAZOPs)
- Conduction Safety Integrity Level (SIL) selection analysis for Safety Instrumented Systems (SISs)
- Conduction Layer of Protection Analyses (LOPA)
- Conducting PSM compliance audits
- Resolving/implementing PHA recommendations
- Complete PSM/RMP program development
- Process safety information development
- SIL selection analyses, including LOPA
- SIS design specifications (for new designs)
- Development of functional testing protocol and testing documents for ISA compliance
- Development of Cause/Effect diagrams

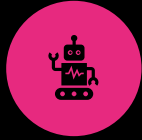


A photograph of a red pin and a group of yellow pins on a dark surface. The red pin is on the left, and the yellow pins are on the right. The word 'COMPETITIVENESS' is overlaid in white, italicized, serif font across the middle of the image. A solid red horizontal bar is at the bottom.

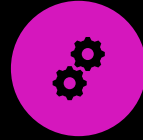
COMPETITIVENESS



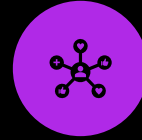
INDEPENDENT /
UNBIASED



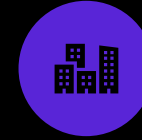
HIGHLY
SKILLED
SENIOR
LEVEL
PROCESS
ENGINEERS
WITH REAL
WORLD,
HANDS-ON
EXPERIENCE



STATE OF THE
ART PROCESS
ENGINEERING
TOOLS



EXTREMELY
RESPONSIVE
TO CLIENT'S
NEEDS



MOBILIZE
QUICKLY
ON SMALL
AND LARGE
PROJECTS



AVAILABLE
FOR PROJECTS
IN MALAYSIA

COMPETITIVENESS

THANK YOU

- *For more information, visit us at:
www.full-point-concept.com*

PROCESS
ENGINEERING INTERNATIONAL, LLC
Excellence in Applied Chemical Engineering

